

Panasonic
ideas for life

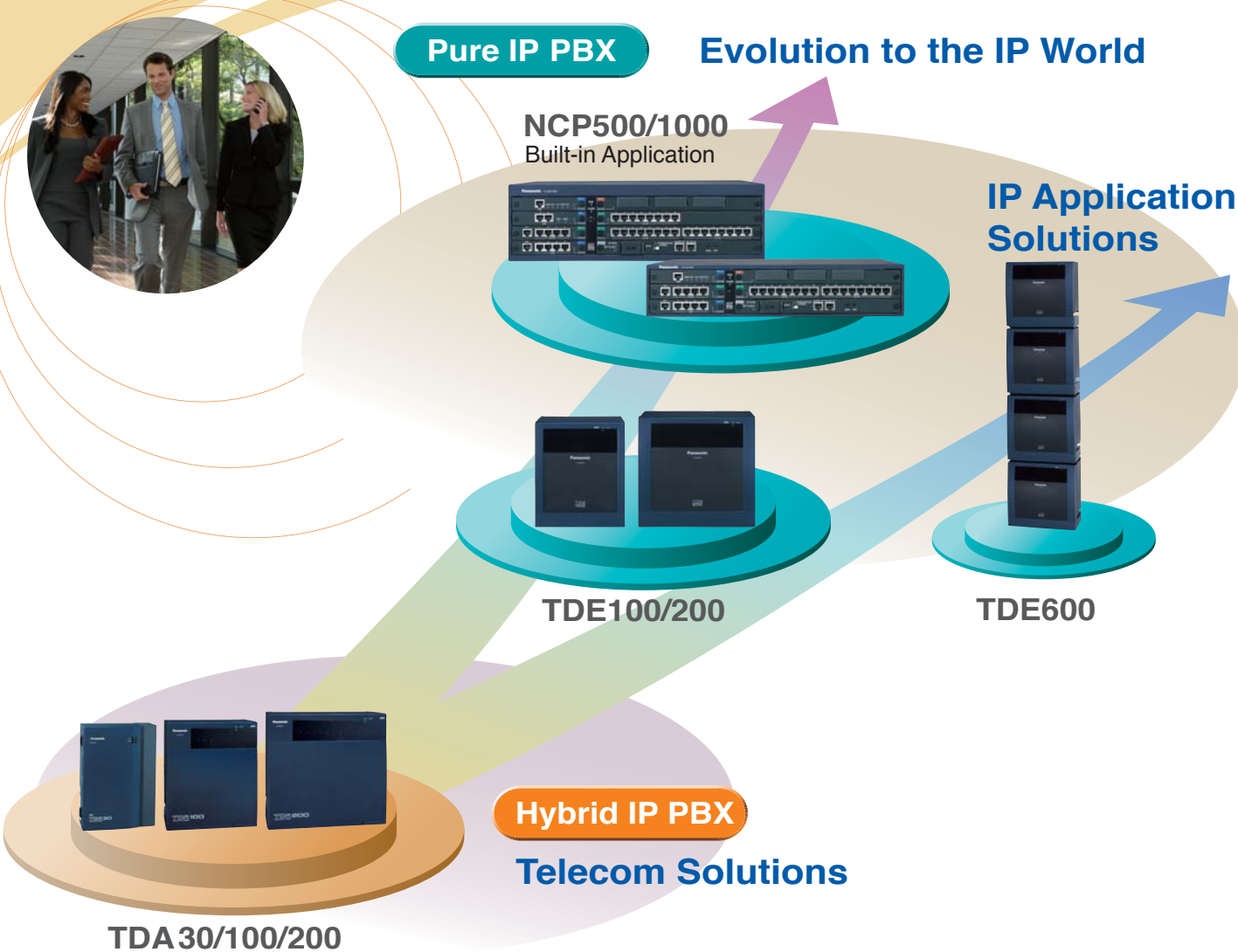


2009 - 2010

Office Communication Systems



Panasonic PBX Evolution



Today's offices are shifting from traditional telecom systems to low-cost, flexible IP systems that take full advantage of the rapid growth in IP applications and globalisation. KX-NCP Series & KX-TDE Series can be used to construct a full-IP telecom system, making them a perfect match for these new communications systems. The KX-NCP Series & KX-TDE Series offer new, standard-equipped IP functions that boost efficiency and lower communication costs.

They also include convenient and highly effective features such as wireless operation, voice mail and CTI. For companies planning to switch to a full-IP system, Panasonic IP-PBX systems offer a

scalable, easy-to-use platform that adapts to a wide range of business fields for future expansion. In addition, these models also support traditional telecom lines, so they allow IP systems to be integrated with conventional telecom systems such as ISDN and analogue lines. Depending on the office environment, it may be difficult to switch an existing traditional telecom line to a full IP system all at once due to time and cost restrictions. The KX-TDE100/200/600 respond flexibly to needs like this. By changing the main board in the current TDA series, a new system can be easily constructed. This lets the KX-TDE100/200/600 provide optimal solutions for companies that want to smoothly migrate to an IP system while continuing to use their existing telecom network.



Pure IP PBX

Connecting People, Connecting Business. NCP Solutions

Panasonic's Network Communication Platforms (KX-NCP) are advanced communication solutions designed to enable businesses achieve Unified Communications by enhancing and streamlining office communications with presence enriched productivity applications.



KX-NCP500

Max.Trunks:72 Max.Extensions:68

Multi-site Networking for Flexible Communications

The KX-NCP leverage the latest digital networking, Voice over IP (VoIP) and SIP technologies to cost effectively handle intra-office, multi-site and long distance communications over converged voice and data networks.

SIP Networking

Using the built-in SIP trunking interface, businesses now have the ability to connect the NCP Communication Systems to the growing list of SIP based Internet Telephony Service Providers (ITSP) to achieve low-cost VoIP calls over managed broadband IP networks.

19-inch Rack Mountable

The flat, compact body fits neatly into a standard 19-inch rack.



KX-NCP1000

Max.Trunks:96 Max.Extensions:108

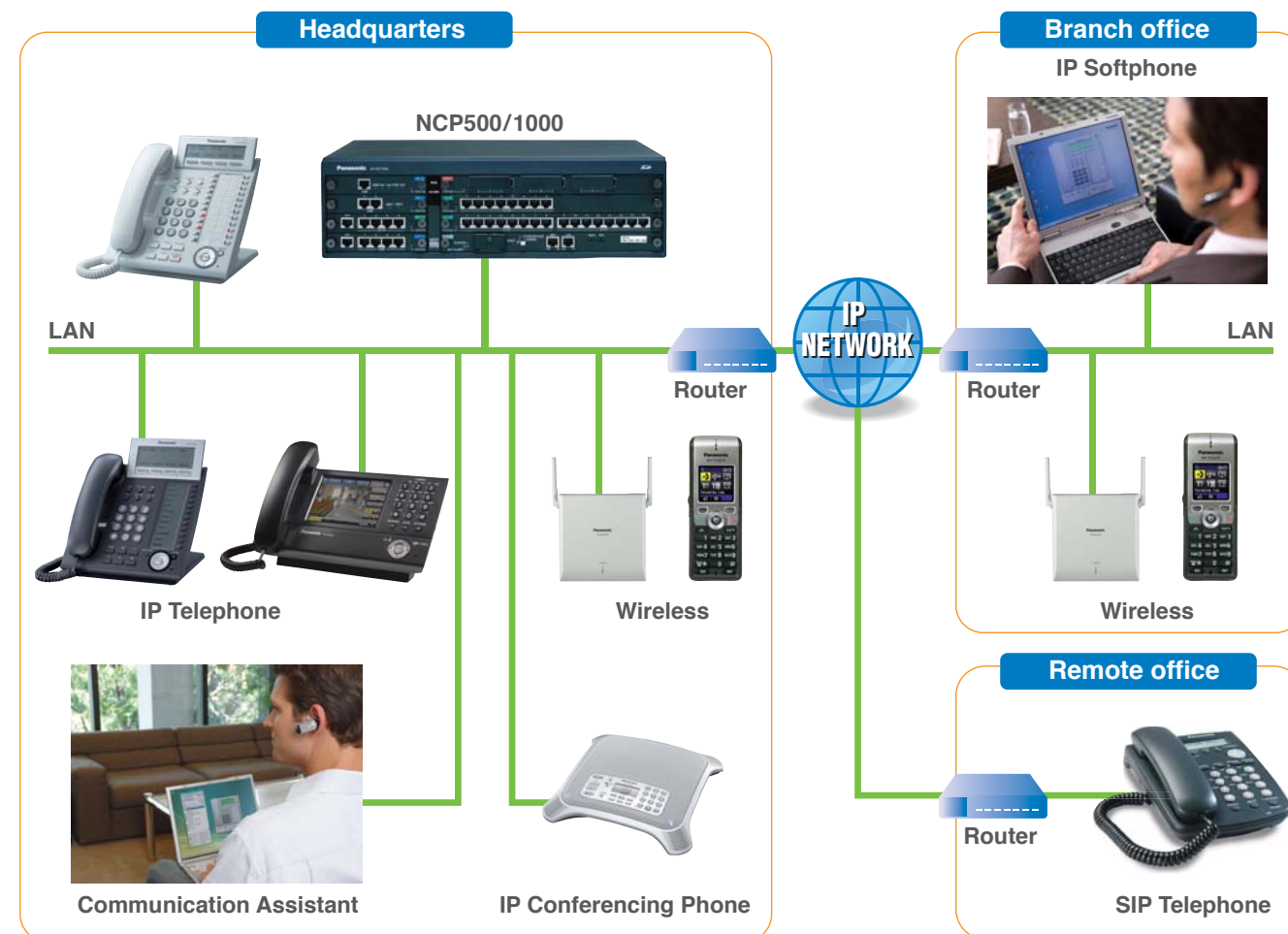
Remote Administration from Anywhere

With KX-NCP systems, administrators can remotely manage any deployment scenario whether a stand-alone system or a networked multi-site system connected over an IP network.

Server-less system for Office Work Assistance Application

A built-in application server provides desktop solutions and enables simple installation.

- Built-in Communication Assistant
- An Activation Key for CA Client Basic for 5 Users are preinstalled.
- Built-in Simplified Voice Mail (2channels)
- Built-in Small Call Centre



*For details of the specification, please refer to page 16-19

Pure IP PBX

You can easily switch from the Hybrid IP PBX KX-TDA series.

Panasonic TDE series Power Enhancing Features

The KX-TDE series Pure IP PBXs are advanced corporate communication systems providing IP telephony features and functionalities over both local and broadband IP networks. They are an ideal communication platform to help customers solve all their business telephony needs today as well as in the future as they embrace full IP telephony, empowered with the latest SIP technology.

Full-IP compatibility

Various IP interfaces such as IP trunk, SIP trunk, IP Proprietary Telephone, Softphone, and SIP extensions can be accommodated, connected and supported.

Support the new IP Proprietary telephone KX-NT400

The KX-NT400 is equipped with a touch panel on a large colour LCD, allowing easy operation. You can link to a network camera and can also access intranet Web applications without PC. All this makes for smooth office Communication.

Fully equipped with TDA functions and solutions

- Uses TDA's option cards and inherits its easy operation.
- Simple setup
- Easy maintenance
- Full support of TDA features
- Upgradeable to TDE by changing the main card (IPCMR card) in the TDA

Built-in Simplified Voice Message

KX-TDE is preinstalled with the simplified Voice Mail feature (2 channels). An additional option card allows for a maximum of 8 channels to be supported. In addition to the voice mail service, you can also record your own personal greeting message and on-hold tone.



Conference Group Call

A proprietary telephone user can call a pre-determined conference group of up to 7 parties to establish a conference call.

Multi-site Programming

Up to 100 TDE's can be programmed by one PC at the same time when each TDE connected to the network. This function also makes it easy to set all of the PBX programs at the same time.

Walking extension (Hot Desking)

It is possible to use any extension, and to have your extension setting available whenever you want it. This is a very useful feature when...

- You move locations
- There is no specific desk for you to use

Easy Maintenance

- Using a PC Program, with the same method as the TDA series.

IP Proprietary Telephones

IP Proprietary Telephone Line-up

The Panasonic KX-NT400 IP proprietary telephone is an innovative and stylish hi-end model. It is equipped with a touch panel on a large colour LCD, allowing easy operation. You can link to a network camera and can also access intranet Web applications.



KX-NT400

- Display Unit
- Colour Touch Screen LCD
 - Network Camera Integration
 - Application built-in
 - Speakerphone
 - 2 Ethernet Ports(100 Base-TX)
 - Power-over-Ethernet(PoE)
 - Bluetooth® Module

KX-NT366

- 6-Line Backlit Display
- 4 x 12-Self Labelling, Flexible CO Buttons
- Digital Speakerphone
- 2 Ethernet Ports (100 Base-T)
- Power-over-Ethernet (PoE)
- Bluetooth® Module (Option)

KX-NT346

- 6-Line Backlit Display
- 24 Flexible CO Buttons
- Digital Speakerphone
- 2 Ethernet Ports (100 Base-T)
- Power-over-Ethernet (PoE)
- Bluetooth® Module (Option)
- Add-on 12-Key Module (Option: KX-NT303) or Add-on 60-Key Module (Option: KX-NT305)

KX-NT343

- 3-Line Backlit Display
- 24 Flexible CO Buttons
- Digital Speakerphone
- 2 Ethernet Ports (100 Base-T)
- Power-over-Ethernet (PoE)
- Bluetooth® Module (Option)
- Add-on 12-Key Module (Option: KX-NT303) or Add-on 60-Key Module (Option: KX-NT305)

KX-NT321

- 1-Line 8 Flexible CO Buttons
- Digital Speakerphone
- 2 Ethernet Ports (100 Base-T)
- Power-over-Ethernet (PoE)

Options

KX-NT303

Add-on 12-Key Module (For KX-NT346 and KX-NT343 only)

KX-NT305

Add-on 60-Key Module (For KX-NT346 and KX-NT343 only)

KX-NT307

Bluetooth® Module (For KX-NT400/366/346/343 and KX-DT346/343 only)



Mounting the KX-NT307 lets you connect a commercially available Bluetooth headset for hands-free communication (Answer a call/End a call/Voice communication).

SIP Telephone



KX-HGT100

- Integration with Panasonic NCP, TDE Series and Voice Processing System
- 2-line, 16-character LCD
- 2nd Ethernet Port
- Power-over-Ethernet (PoE)
- Hold, Transfer, Mute, Speakerphone
- Caller ID & Call Log
- Voice mail waiting indicator

IP Conferencing Phone



KX-NT700

- Compatibility with Panasonic NCP, TDE Series
- Full duplex acoustic echo-canceller
- Conference recording with SD Memory Card
- Power-over-Ethernet (PoE)
- Speech speed conversion
- Conferencing phone manager application (Simple video conferencing system with Panasonic Network camera)*
- *Peer to Peer connection only



*For details of the specification, please refer to page 16~19

Hybrid IP PBX Systems

You can easily migrate to the pure IP PBX KX-TDE series.



KX-TDA15

Max. 8 CO lines /
16 Extensions
(20 Extensions with DXDP)

KX-TDA30

Max. 8 CO lines / 28 Extensions
(52 Extensions with DXDP) or Max.
12 CO lines / 24 Extensions
(44 Extensions with DXDP)
IP-GW or E1 can be added using
a remaining slot.



KX-TDA100

Max. 96 CO Lines
(120 Channels with PRI30 x 4) /
64 Extensions
(160 Extensions with MEC Card)



KX-TDA200

Max. 128 CO Lines / 128 Extensions
(256 Extensions with MEC Card)

► Makes Communications Easy

- Stylish, Easy to use, and Efficient digital telephones
- A USB terminal that provides easy plug-n-play connection to a PC
- Expansion of digital proprietary telephones (DXDP)

► Cost-effective Performance

- Voice over Internet Protocol (VoIP)
- QSIG digital networking allows basic call handling (outgoing and incoming), closed numbering routing, and CLIP/COLP/CLIR/COLR
- Automatic Route Selection (ARS) / Least Cost Routing (LCR)
- Reliable networking via T1/E1, E&M

► Efficiency That You Will Appreciate

- Multi-cell wireless integration
- Mobile phone integration
- TAPI 2 CTI interface (TAPI and CSTA)
- PC-phone / PC-console
- Advanced call centre function
- ISDN capability (BRI/PRI)
- Centralised Voice Mail
- 2ch Cell Station to connect DPT interface port



Proprietary Telephones

Digital Proprietary Telephone



KX-DT346

- 6-Line Backlit LCD Display
- 24 Flexible CO Buttons
- Digital Speakerphone
- 60-DSS Console (Option : KX-DT390)
- Bluetooth®Module (Option : KX-NT307)
- Add-On 12-Key Module (Option : KX-NT303)
- USB Module (Option : KX-DT301)



KX-DT343

- 3-Line Backlit LCD Display
- 24 Flexible CO Buttons
- Digital Speakerphone
- 60-DSS Console (Option : KX-DT390)
- Bluetooth®Module (Option : KX-NT307)
- Add-On 12-Key Module (Option : KX-NT303)
- USB Module (Option : KX-DT301)



KX-DT333

- 3-Line LCD Display
- 24 Flexible CO Buttons
- Digital Speakerphone
- 60-DSS Console (Option : KX-DT390)



KX-DT321

- 1-Line LCD Display
- 8 CO Buttons
- Digital Speakerphone
- 60-DSS Console (Option : KX-DT390)

Analogue Telephone with Message Lamp (For Hotel etc...)



KX-T7710

- Proprietary Telephone
- Message / Ringer Lamp
- One-touch Button Panel
- Data Port

Options



KX-DT301

- USB Module
(For KX-DT346/343 only)



KX-NT303

- Add-on 12-Key Module
(For KX-DT346/343 only)



KX-DT390

- 60 DSS Console
(For KX-DT346/343/333/321 only)



KX-NT307

- Bluetooth®Module
(For KX-NT400/366/346/343
and KX-DT346/343 only)



Mounting the KX-NT307 lets you connect a commercially available Bluetooth headset for hands-free communication (Answer a call/End a call/Voice communication).

Multi-Cell DECT System

Enjoy superb mobility no matter what your business demands. Whether you work in an office, a factory, a warehouse, a supermarket, or other large facility. The Panasonic Multi-Cell DECT System keeps you in constant touch with colleagues and customers even when you are unmetered and moving within the work environment.



Colour LCD Basic Model



KX-TCA175
Dimension(LxWxD)(mm):143.5x47x24
Weight:130g

Colour LCD Compact Business Model



KX-TCA275
Dimension(LxWxD)(mm):123x45x23
Weight:115g

Colour LCD

Full access to PBX Enterprise Features

Fully Integrated with enterprise telephony features like Multi-line, Dial by name, etc. Flexible CO Keys let you register PBX features and handset functions for quick, convenient access.



KX-TCA175, KX-TCA275

- 6-line Colour LCD backlight
- CTI application available*1
- Soft key edit
- Dynamic operation guidance with soft keys.
- Illuminated keypad
- Multiple language display
- Speakerphone
- Programmable soft keys
- PBX functionality support
- 200 entry phonebook
- Headset compatible
- 10 polyphonic ringer melodies and 10 ringing patterns
- Vibrate alert*2
- Meeting mode*2

*1 Use may not be possible depending on the version of KX-TDA0158.

*2 Only KX-TCA275



Tough-type Model (IP54 compliant)



KX-TCA355
Dimension(LxWxD)(mm):150x50x27
Weight:160g

KX-TCA355

- 6-line blue LCD backlight
- Illuminated keypad
- Multiple language display
- Speakerphone
- Programmable soft keys
- PBX functionality support
- 200 entry phonebook
- Headset compatible
- 9 polyphonic ringer melodies and 6 ringing patterns
- Vibrate alert
- Meeting mode

Ruggedised IP54 Compliant DECT

The KX-TCA355 ruggedised handset meets strict dust and splash resistant IP54* standards. And Impact absorbing rubber is adopted around the KX-TCA355 and the cabinet (outer plastic covering) is also used impact-touch materials.



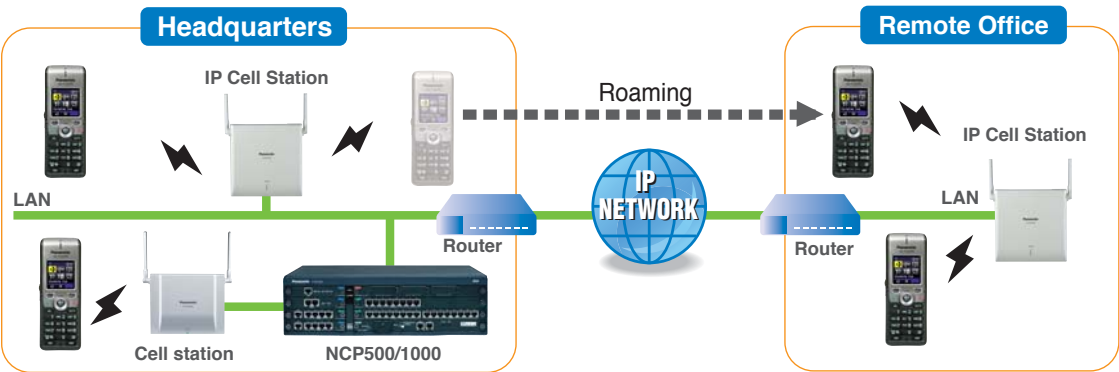
*IP5 = Dust resistance (Protection from dust penetration to a level that does not interfere with the operation of handset)
IP4 = Water resistance (Protection against splashing water)

IP Cell Station

IP-Cell Station allows you to connect PBX via LAN. If there is a LAN in your work place, you can connect to it directly and communicate with remote locations such as headquarters to remote offices, increasing the efficiency of your business.



KX-NCP0158
LAN/IF
8 speech paths



Cell Station



KX-TDA0158
DPT/IF
8 speech paths



KX-TDA0155
DPT/IF
2 speech paths
KX-TDA0156
CS/IF
4 speech paths

Repeater



KX-A272

Used with Repeater, the range can be extended. A maximum of six repeaters per CS are available.

System Capacity

	KX-NCP1000	KX-NCP500	KX-TDE600	KX-TDE100/200	KX-TDA100/200	KX-TDA30	KX-TDA15
CS	KX-NCP0158	8	8	16	16	-	-
	KX-TDA0158	4	2	64	16	4	2
	KX-TDA0155	8	4	128	32	8	4
	KX-TDA0156	-	-	128	32	-	-
PS	KX-TCA series	64	64	512	128	28	28

PBX Requirement

Cell Station	PBX Requirement
KX-NCP0158	KX-NCP500/1000 MPR Ver.2.0 or later, KX-TDE series MPR Ver.3.0 or later
KX-TDA0158*	KX-NCP500/1000 MPR Ver.1.0 or later, KX-TDE600 MPR Ver.2.0 or later
	KX-TDE100/200 MPR Ver.1.0 or later, KX-TDA600 MPR Ver.5.0 or later
	KX-TDA100/200 MPR Ver.5.0 or later, KX-TDA15/30 MPR Ver.5.0 or later
KX-TDA0155	KX-NCP100/200 MPR Ver.1.0 or later, KX-TDE600 MPR Ver.2.0 or later
	KX-TDA100/200 MPR Ver.1.0 or later, KX-TDA600 MPR Ver.2.2 or later
KX-TDA0156	KX-TDA100/200 MPR Ver.1.1 or later, KX-TDA30 MPR Ver.1.0 or later, KX-TDA15 MPR Ver.1.1 or later
	KX-TDE600 MPR Ver.2.0 or later, KX-TDE100/200 MPR Ver.1.0 or later
	KX-TDA600 MPR Ver.2.2 or later, KX-TDA100/200 MPR Ver.1.0 or later

*Use of the TCA 175/275's CTI application feature may not be possible depending on software version.

Communication Assistant (CA)

The Panasonic Communication productivity suite is a highly intuitive -PC based software application suite that converges telephony with screen based presence, availability, and a variety of collaboration tools to simplify and enhance real-time communications for business telephony users.



For Personal Productivity

CA Basic Point and click unified communications for desk-based or remote workers.

CA Pro Intuitive point and click telephony fully featured with real-time presence indication. Stay informed of users availability in different locations.

- Presence
- Visually Dial Contacts
- Incoming Call Popup
- Chat
- Searchable History
- IP Softphone(Optional)
- CRM Integration
- Easy Access to Common Phone Functions
- VMA(Voice Mail Assistant)
- Microsoft Outlook Integration
- Support LDAP
- Support Thin Client

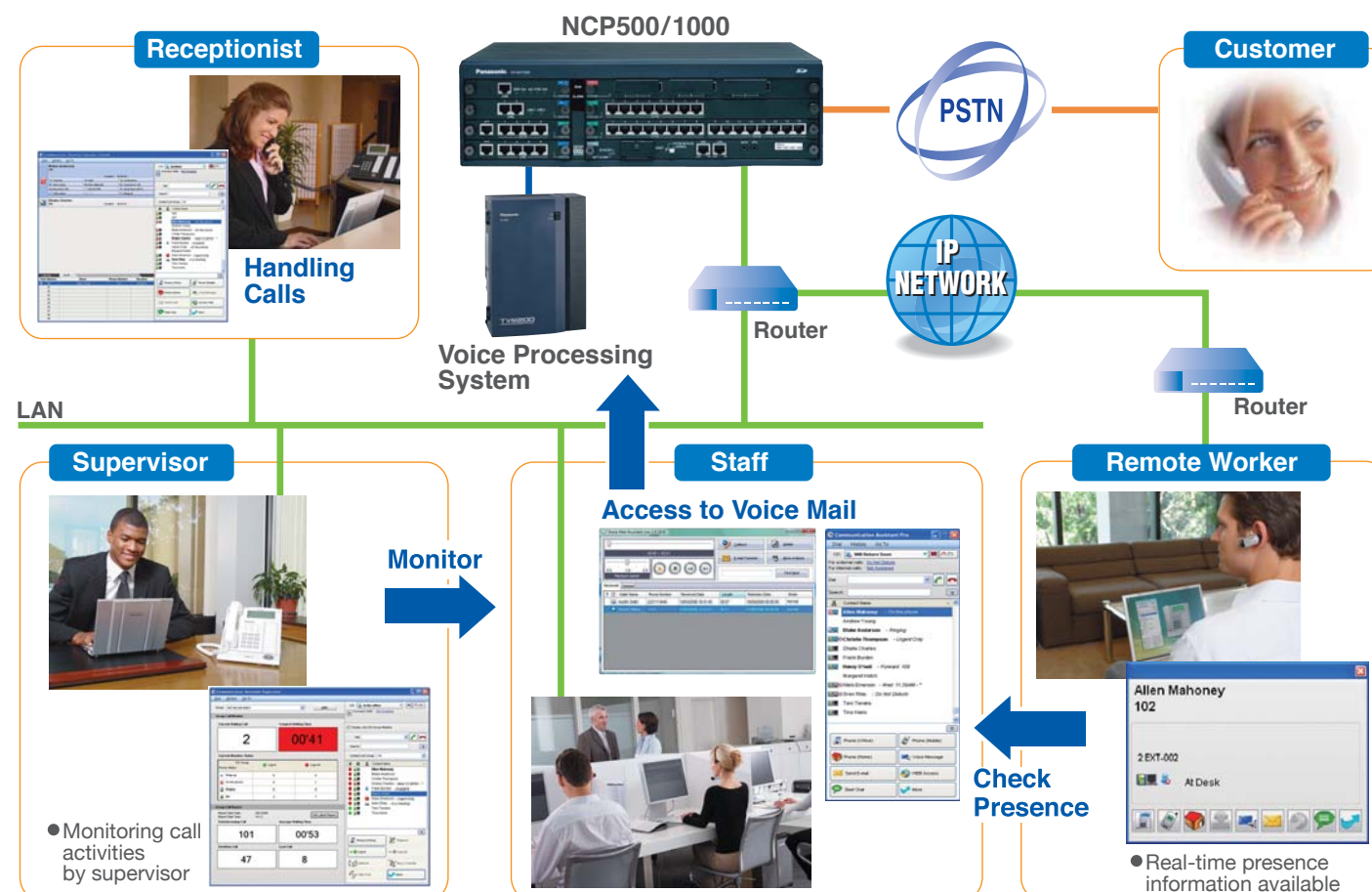
For Team/Group Productivity

CA Supervisor Team supervisor can easily monitor and manage real-time telephony activities of group members and agents.

- Monitor Telephony Activities
- Call Monitoring
- Call Distribution Incoming Call Distribution(ICD)Group
- Manage Team Members Calls
- Quick Reports

CA Operator Console

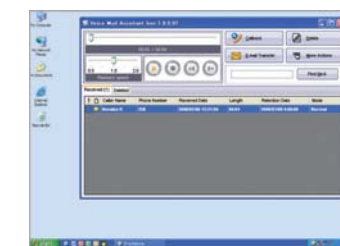
An operator can use the software to easily handle all calls, professionally handling communications between customers and colleagues.



Communication Assistant - Voice Mail Assistant (VMA)

Voice Mail Assistant allows Unified Messaging functionality, giving users the means to access and retrieve in the order they prefer any voice messages left for them.

Companies using the optional advanced KX-TVM Voice Messaging solution can allow Communication Assistant users to visually manage their voice mails with Voice Mail Assistant. It can be launched directly from Communication Assistant via the Message icon.



Voice Mail Assistant

Network Camera Integration with Communication Assistant

Panasonic Network Cameras can also be integrated, allowing users to answer a Doorphone and open the door after viewing the Network Camera video feed on screen.



Entrance



Reception

Communication Assistant(CA) Ver.2.0 Specification

Description	Basic	Pro	Operator Console	Supervisor
Login Capability				
PBX Only	128	128	128	4
with CA Server	256	256	128	128
Feature				
View other extensions' presence from main menu	No		Yes	
Maximum number of contacts	10		2000	
Maximum history length	10 calls		1000 calls	
ICD group login/logout	No		Yes	
Listen-in/Busy override/Take over	No	No	No	Yes
ICD group supervisor	No	No	No	Yes
Network features	No		Yes	

A CA activation key for the desired number of users must be registered in the PBX. The specifications are approximations and may vary according to your computer's status, network conditions, other programs running, etc. KX-TDE600 users are strongly recommended to use CA server with CA client.

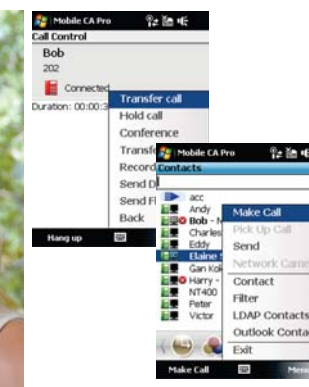
Free and Trial CA Installations

PBX Model	Number of free CA Basic Users	Total number of CA Pro and CA Operator Console 60-day trials
KX-NCP500/KX-NCP1000	5	2*1
KX-TDE100/KX-TDE200	10	4
KX-TDE600	20	8

*1 CA Pro and CA Console 60-day trials for KX-NCP series PBXs include IP Softphone functionality for the duration of the trial, but only if CA Server is not installed on the PBXs network.

Mobile Communication Assistant

Mobile CA is a software application installed on your mobile device, which is paired with a PBX extension, such as a proprietary telephone.



IP Softphone

IP Softphone is a PC based business softphone application. Provide IP Telephony with full Digital Proprietary Telephone. This IP Softphone is low cost and Mobility telephone for NCP, TDE & TDA.



Voice Processing System



Voice Processing System
KX-TVM50/TVM200

The human voice is still the best way to communicate. And with the KX-TVM50 and KX-TVM200, Panasonic introduces two feature-packed voice processing systems (VPS) designed for efficient communication. The KX-TVM50 and KX-TVM200 each offer automated attendant, automatic call routing, and message notification, and each can be customised to your needs.

KX-TVM50/200 Specifications

Number of Ports	KX-TVM50	KX-TVM200
Number of Ports	2 to 6	0 to 24
Voice Storage	Initial: 4h Max.:8h	Max. 1000 h
Number of Mailboxes (including System Manager and Message Manager mailboxes)	Max. 64	Max. 1024
Number of Messages	Unlimited	
Message Recording Medium	Flash Memory	HDD
Remote Modem	Modem Card (Max. 33,600 bps)	
Support of DHCP and SMTP Server*1	•	•
Scheduled Backup*1	•	•

*1 Require upgrade of Ver. 2.0

Optional Accessories

			TVM50	TVM200
TVM Cards	KX-TVM502	2-Port Hybrid Expansion Card	•	•
	KX-TVM503	2-Port Digital Expansion Card	•	•
	KX-TVM524	Memory Expansion Card	•	•
	KX-TVM594	LAN Interface Card	•	•
	KX-TVM296	Modem Card	•	•
	KX-TVM204	4-Port Digital Expansion Card	•	•

Analogue Telephone Systems

An analogue telephone system that offers easy-to-use communication power

Panasonic's analogue telephone system has taken telephone systems for small to mid-sized companies a giant leap forward, offering features seldom available in this category. Its easy upgradability reduces the cost of expansion, Caller ID increases your efficiency, and voice-processing integration improves productivity.



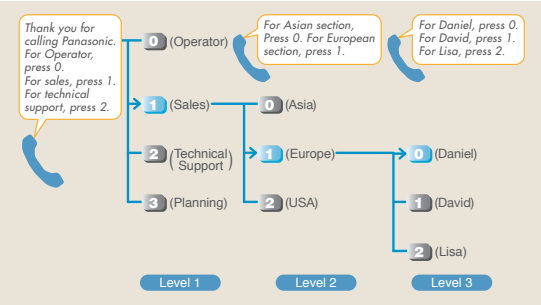
- 3 CO lines and 8 Extensions (8: Hybrid)
- 3-level Automatic Reception with Voice Guidance
- DISA (Direct Inward System Access) with message
- Built-in Voice Message (BV)
- Caller ID Display on SLT and APT
- Flexible SMS Routing
- Intuitive Customisation and Maintenance
- UCD (Uniform Call Distribution) with message
- Doorphones, Door Openers, and Doorbells

3-level Automatic Reception with Voice Guidance

- More efficient handling of incoming calls.
- Callers can call after-hours and still access desired extensions.
- Shares the operator load.

3-level Automated Attendant (AA) service allows a caller to dial a single-digit number following the guidance of 3-level DISA^{*1} outgoing messages, and be directed to the appropriate section without having to go through an operator.

*1 DISA (Direct Inward System Access)

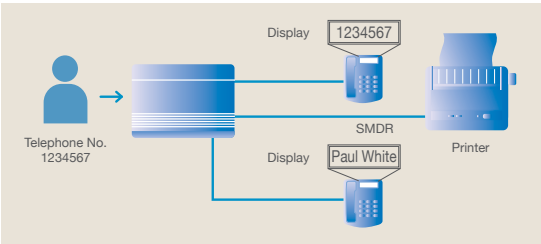


Caller ID Display^{*1} on SLT and APT

- Caller Recognition.
- Better Call Management.

The system is compatible with Caller ID, which allows a user to see the caller's information on Single Line Telephones (SLTs)^{*2} and Analogue Proprietary Telephones (APTs). Proprietary display telephones can be used to access the Caller ID log for the 20 most recent calls (Call Log). And the system has 300 common logs. The logged incoming calls can be called back easily.

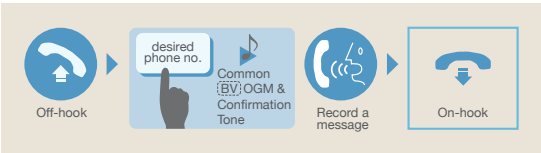
*1 An optional card is required.
Please contact your dealer or phone company to confirm if the Caller ID service is available in your area.
*2 SLT that supports Caller ID is required.



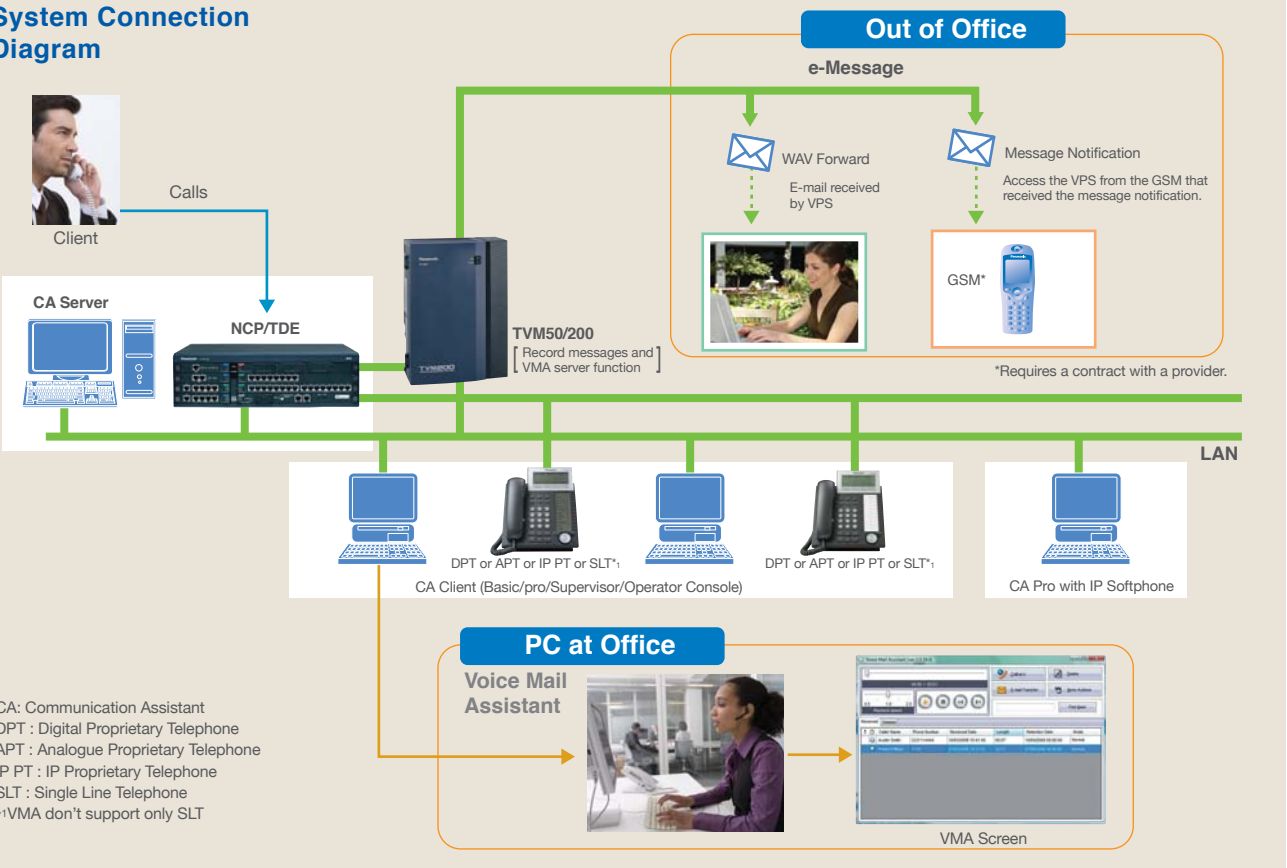
Built-in Voice Message (BV)^{*1}

Customise your mailbox by recording your own greeting messages that are played when you can't answer your phone. Your callers can record their messages directly into your personal mailbox, Call Centres and Workgroups can use the common message area for recording caller messages that can be played back later by an operator (manager).

*1 An optional voice message card is required.



System Connection Diagram



CA: Communication Assistant
DPT: Digital Proprietary Telephone
APT: Analogue Proprietary Telephone
IP PT: IP Proprietary Telephone
SLT: Single Line Telephone
*VMA don't support only SLT



KX-T7735

- Display Unit
- 3 lines x 16 characters LCD
- 12 Programmable CO Keys
- Navigator Key
- Speakerphone
- Headset Compatible
- Incoming Call / Message Lamp

KX-T7730

- Display Unit
- 1 line x 16 characters LCD
- Navigator Key
- Incoming Call / Message Lamp

KX-T7740

- DSS Console
- 32 Direct Station Selection (DSS) keys
- 32 Busy Lamp Field (BLF) keys

KX-T7765

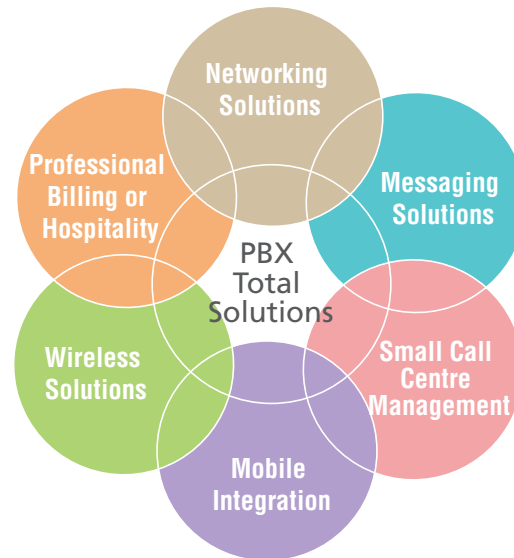
- Doorphone

*For details of the specification, please refer to page 19

PBX Total Solutions

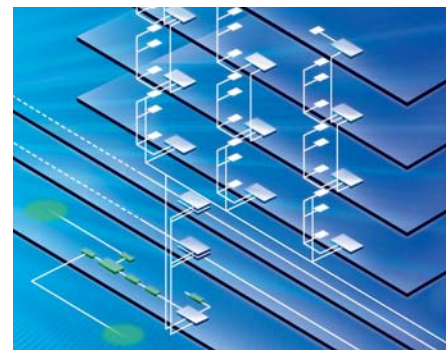


Revolutionary changes are occurring today in both telecommunications and information technology. Our business environments are also changing to focus more on solution-oriented applications. Panasonic business telephone systems are uniquely positioned to maximise the benefits to be afforded by such changes, with products that are always at the cutting edge and packaged in such a way as to offer customers a total solution approach.



Networking Solutions

Any type of business can benefit from a reliable, low-cost, easy-to-use inter-office networking system. Features such as E&M leased lines and voice-over IP can help you cut costs dramatically while enjoying easy access within a private inter-office network. For example, network numbering lets you assign telephone numbers to each extension at a branch or head office, saving time and money. KX-NCP/TDE/TDA supports VoIP Network, TIE Line (PRI/T1/E1/E&M), QSIG Network etc. and users can manage a company-wide IP-PBX System from head office, branch office and plants in different locations as Multi-site office.

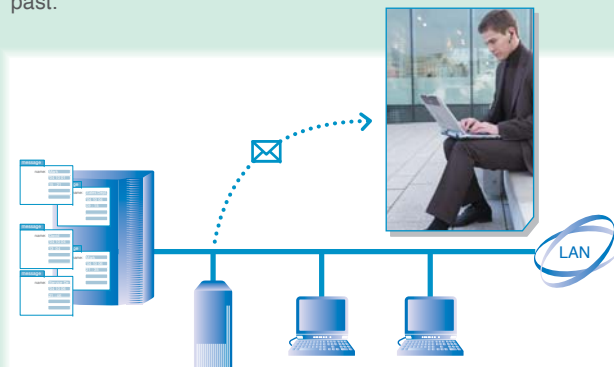


Messaging Solutions

Panasonic's messaging solutions give you multilingual capabilities and efficient call handling, so you can give customers the service and support they deserve. You also benefit from a system that takes messages automatically and keeps you in touch 24 hours a day. And, of course, you'll love the cost savings. Panasonic's messaging solutions mean more convenience for you and more satisfaction for your customers.



You can configure the VPS to notify you by e-mail when you've received new messages; you can then log in to your mailbox remotely and listen to your messages. Better yet, have the VPS send your new messages in telephone-quality WAV file format as e-mail attachments, and listen to your messages without even picking up the phone! You can easily forward them by e-mail to other parties, and keep backup copies of those messages on your PC. Calling the office to check your messages is finally a thing of the past.



Centralised Voice Mail

Voicemail resource can be shared across the network. It provides centralised mailbox access, Message Waiting indication, Direct mailbox access and Auto attendant service.

Custom Service

Using Custom Service, you can give callers 1-digit access to department extensions, special announcements, and other information. The caller listens to the first Custom Service Menu, then select from the options available.

Voice Mail (VM) Menu on the LCD

For easier operation, Voice Mail menus and the number of new messages received can be displayed on the LCD screens of Proprietary Telephones. Users can retrieve messages or specify parameters.

Exclusive Panasonic Functions

▶ Live Call Screening (LCS)

When the LCS mode is activated, you can monitor incoming messages and decide whether or not to take the call. This handy feature is similar to having a telephone answering machine right at your desk.

▶ Two-Way Recording

This feature allows an extension user to record a conversation in a mailbox by simply pressing the Two-Way Record function key. A variation of this feature is Two-Way Transfer, which permits the extension user to record a conversation in another Subscriber's mailbox; this is ideal for firms that want their receptionists to personally record messages from callers.

Professional Billing or Hospitality

For companies in the hospitality field, Panasonic PBX systems are a great tool for improving productivity and customer service. These systems provide a built-in hotel function with features such as check in/out, wake up call, and more. They can also be integrated with an external charge box and message-waiting lamps on room telephones. Use of a Property Management System (PMS) interface (KX-A291/KX-A292/KX-A293) allows the KX-NCP, KX-TDE, KX-TDA series to link with computer-based hotel management software, for efficient operation with most of the world's hotel software. This provides several features that boost efficiency and let you provide better customer service, including:

- Check in/out
- Wake up call set/cancel/confirmation/alarm
- Message waiting lamp on/off
- Room status information
- Call accounting
- Set / Clear extension name



Small Call Centre Management

No matter how large or small your operation, Panasonic offers PBX systems that make you look brilliant. Our intelligent call-management features help improve work efficiency, increase customer satisfaction, and polish your company image. Panasonic digital telephone systems provide Uniform Call Distribution (UCD), which distributes calls to a group of extensions for your agents to answer. When all agents are busy, the system serves as a receptionist, playing a message to the caller. A supervisor can monitor the call status on the LCD of Digital Proprietary Telephone and check the real-time performance for the management decisions.

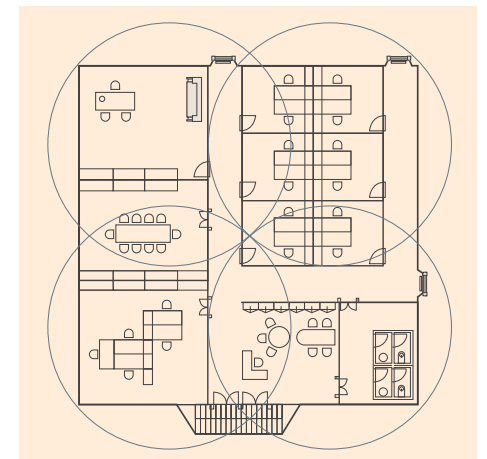
Built-in Call Centre features

- Call Distribution to Longest Idle Extension
- Queuing Message
- VIP Priority
- Wrap-up
- Busy-on-Busy
- Log-in / Log-out



Wireless Solutions (DECT)

Wireless compatible, Panasonic Business Telephone System gives you greater efficiency and mobility with communication powers that go way beyond the office. In operations such as factories and warehouses, it lets your staff stay on top of merchandise while moving about the shop floor. At car dealerships and other businesses with widespread locations, it lets you respond to customers more quickly. This new digital system lets you provide prompt customer service and make the most of every business opportunity.



Mobile Integration

Mobile telephones can be registered to the PBX as extensions. The mobile telephone members work as "Virtual" Portable Stations (PS) and use 3-5 digit PBX extension numbering. Calls that come for salespeople while they are out of the office can be sent to their mobile telephone without having to use call forwarding. Work can be smoothly handled from outside the company.



IP-PBX Systems

System Capacity

- KX-NCP500 (PBMPR Ver.2.0)
- KX-NCP1000 (PBMPR Ver.2.0)

Maximum Number of Trunks

The PBX supports the following number of trunks and extensions.

Type	KX-NCP500	KX-NCP1000
Total Number of Trunks	72	96
Trunk with option card	64	64
IP Trunk on MPR card	8	32

For non-peer-to-peer calls via the DSP card, calls cannot be made or received when all of the card's resources are being used.

Maximum Terminal Equipment

The following shows the number of each terminal equipment type supported by the PBX.

Terminal Equipment Type	KX-NCP500	KX-NCP1000
Telephone	68	108
SLT	20	36
KX-DT300/KX-T7600 series DPT	24	40
KX-T7560/KX-T7565 DPT	20	36
Other DPT	6	10
APT	4	4
IP-PT ⁻¹	40	64
SIP Extension	32	64
DSS console	8	8
CS	4	8
High-density CS	2	4
IP-CS	8	8
PS	64	64
Voice Processing System (VPS)	2	2
Doorphone 16	16 ⁻²	16
Door Opener 16	16	16
External Sensor	16	16
External Relay	16	16

⁻¹ KX-NT400, KX-NT300 series, and KX-NT265 (software version 2.00 or later only)
⁻² When using the DPH2 card, the maximum number of Doorphones is 12.

- KX-TDA100 (PMMPR Ver.5.0)
- KX-TDA200 (PMMPR Ver.5.0)

Maximum Number of Trunks

Type	KX-TDA100	KX-TDA200
Trunk	96(120ch)*	128

* When using PRI30 x 4 cards.

Maximum Terminal Equipment

The following number of items of terminal equipment can be supported by the PBX. For how to count the total number of items of equipment to be connected, refer to "MEC Card Calculation".

Terminal Equipment Type	KX-TDA100		KX-TDA200	
	Without MEC Card	With MEC Card	Without MEC Card	With MEC Card
Telephone	64	160	128	256
SLT	64	96	128	128
KX-DT300/KX-T7600series DPT	64	128	128	256
Other DPT	32	32	128	128
APT	24	24	64	64
IP-PT	64	96	128	128
DSS console	8		8	
CS	32		32	
High-density CS	16		16	
PS	128		128	
Voice Processing System(VPS) ⁻²	2		2	
Doorphone	16		16	
Door Opener	16		16	
External Sensor	16		16	
External Relay	16		16	

⁻¹ Only a single VPS can be connected to one optional service card.

- KX-TDE100 (PMMPR Ver.3.0)
- KX-TDE200 (PMMPR Ver.3.0)
- KX-TDE600 (PGMPR Ver.3.0)

Maximum Number of Trunks

The PBX supports the following number of trunks and extensions.

Type	KX-TDE100	KX-TDE200	KX-TDE600			
			Basic System	2-shelf System	3-shelf System	4-shelf System
Total Number of Trunks	128	128	224	384	544	640
Trunk with option card	120	128	160	320	480	640
IP Trunk on MPR card	64 ⁻¹	64 ⁻¹	64 ⁻¹	64 ⁻¹	64 ⁻¹	64 ⁻¹
H.323 trunks	32	32	32	32	32	32
SIP trunks	32	32	32	32	32	32

⁻¹ Only 49 virtual trunk/extension card channels can be in use at any one time (except for peer-to-peer calls for IP extensions).

Maximum Terminal Equipment

The following number of items of terminal equipment can be supported by the PBX.

Terminal Equipment Type	KX-TDE100	KX-TDE200	KX-TDE600			
			Basic System	2-shelf System	3-shelf System	4-shelf System
Telephone	256	256	368 (432) ⁻¹	608 (736) ⁻¹	848 (1008) ⁻¹	992 (1152) ⁻¹
SLT	96	128	240	480	720	960
KX-DT300/KX-T7600series DPT	128	256	256	512	640	640
Other DPT	32	128	128	256	384	512
APT	24	64	80	160	240	320
IP-PT	192	192	288	448	608	704
IP-PT ⁻² (supported by IP-EXT16card)	96	128	160	320	480	640
IP-PT ⁻² (supported by MPRcard)	128	128		128		
SIP Extension	128	128		128		
DSS console	8	8		64		
CS	32	32	32	64	96	128
High-density CS	16	16	16	32	48	64
IP-CS	16	16	16	16	16	16
PS	128	128		512		
Voice Processing System (VPS) ⁻⁴	2	2		8		
Doorphone	16	16	16	32	48	64
Door Opener	16	16	16	32	48	64
External Sensor	16	16	16	32	48	64
External Relay	16	16	16	32	48	64

⁻¹ Even when Digital XDP is used, each shelf supports a maximum of 256 KX-DT300/ KX-T7600 series DPTs.
⁻² KX-NT300 series (except KX-NT366/KX-NT305), KX-NT265, and KX-NT136
⁻³ KX-NT400, KX-NT300 series, and KX-NT265 (software version 2.00 or later only)
⁻⁴ Only a single VPS can be connected to one optional service card.

- KX-TDA30 (PSMPR Ver.5.0)

Maximum Number of Trunks

The Hybrid IP-PBX supports the following number of trunks.

Line Type	Maximum Number (Channels)
LCOT + BRI + DID	12
VoIP (H.323)	4
VoIP (SIP)	8
E1	30

KX-TDA30 has 4 Super Hybrid Ports for extension pre-installed.

Maximum Terminal Equipment

The following number of items of terminal equipment can be supported by the PBX. Depending on the type and total number of items of equipment to be connected, the MEC card may be required. To determine whether or not the MEC card is necessary, refer to "MEC Card Calculation".

Terminal Equipment Type	Without Additional AC Adaptor		With Additional AC Adaptor	
	24 ⁻¹		24 ⁻¹	
SLT				
KX-DT300 series/KX-T7600 series/KX-T7560/KX-T7565 DPT and KX-DT300 series/KX-T7600 series DSS console		Total 24		Total 48
KX-DT300/KX-T7600 series DPT		24		48
KX-DT300/KX-T7600 series DSS console		4		4
KX-T7560/KX-T7565 DPT		24		24
Other DPT/Other DSS console and APT		Total 4		Total 24
Other DPT		4		24
Other DSS console		4		4
APT		4		4
IP-PT		4		4
DSS console		4		4
VPS		4 ports (1 VPS) ⁻²		4 ports (1 VPS) ⁻²
SLT, PT, DSS console, and VPS		28		56
CS		4		8
High-density CS		2		4
PS		28		28
Doorphone		4		4
Door Opener/External Relay		4		4
External Sensor		4		4

⁻¹ This number includes all ports of SLC cards, regardless of whether an SLT is connected or not.
⁻² A maximum of 4 ports (8 channels) of a single VPS can be connected to the PBX.

Note:Some cards will be exported to limited countries. Please contact our dealer and confirm the availability of specific cards in your country.

- KX-TDA15 (PMMPR Ver. 5.0)

Maximum Number of Trunks

The Hybrid IP-PBX supports the following number of trunks.

Line Type	Maximum Number (channels)
LCOT + BRI	8
VoIP (H.323)	4
VoIP (SIP)	8

Maximum Terminal Equipment

The following amount of terminal equipment can be supported by the Hybrid IP-PBX.

Terminal Equipment Type	Maximum Number
SLT	12 ⁻¹
PT	Total 16
KX-DT300/KX-T7600 series DPT	16
KX-T7560/KX-T7565 DPT	12
Other DPT	4
APT	4
DSS console	4
CS	2
High-density CS	2
VPS	4 ports (1 VPS)
SLT, PT, DSS console, and VPS	Total 20
IP-PT	4
PS	28
Doorphone	4
Door Opener/External Relay	4
External Sensor	4

⁻¹ This number includes 8 ports of SLC8 card, regardless of whether an SLT is connected or not.
⁻² A maximum of 4 ports (8 channels) of a single VPS can be connected to the PBX.

Optional Accessories for NCP,TDE & TDA

Model No.	Description	NCP	TDE600	TDE100/200	TDA100/200	TDA30	TDA15
[NCP/TDE/TDA Options]							
KX-NCP1104	4-Channel VoIP DSP Card (A 4-Channel IP Trunk activation key and an 8 channel IP Proprietarytelephone activation key preinstalled.)	DSP4	●	—	—	—	—
KX-NCP1170	4-Port Digital Hybrid Extension Card	DHLC4	●	—	—	—	—
KX-NCP1171	8-Port Digital Extension Card	DLC8	●	—	—	—	—
KX-NCP1172	16-Port Digital Extension Card	DLC16	●	—	—	—	—
KX-NCP1173	8-Port Single Line Telephone Extension Card	SLC8	●	—	—	—	—
KX-NCP1174	16-Port Single Line Telephone Extension Card	SLC16	●	—	—	—	—
KX-NCP1180	4-Port Analogue Trunk Card	LCOT4	●	—	—	—	—
KX-NCP1187	T-1 Trunk Card	T1	●	—	—	—	—
KX-NCP1188	E-1 Trunk Card	E1	●	—	—	—	—
KX-NCP1190	Optional 3-Slot Base Card	OPB3	●	—	—	—	—
KX-NCP1280	2-Port BRI Card	BRI2	●	—	—	—	—
KX-NCP1290	PRI Card	PRI23	●	—	—	—	—
KX-NCP1290CE/CJ/CN	PRI Card	PRI30	●	—	—	—	—
KX-NCS2010	Activation Key for CA Thin Client	CA Thin Client	●	●	—	—	—
KX-NCS2020	Activation Key for CSTA Multiplexer	CSTA Multiplexer	●	●	—	—	—
KX-NCS2101	Activation Key for CA Basic for 1 User	CA Basic 1user	●	●	—	—	—
KX-NCS2105	Activation Key for CA Basic for 5 Users	CA Basic 5users	●	●	—	—	—
KX-NCS2110	Activation Key for CA Basic for 10 Users	CA Basic 10users	●	●	—	—	—
KX-NCS2140	Activation Key for CA Basic for 40 Users	CA Basic 40users	●	●	—	—	—
KX-NCS2149	Activation Key for CA Basic for 128 Users	CA Basic 128users	●	●	—	—	—
KX-NCS2201	Activation Key for CA PRO for 1 User	CA Pro 1user	●	●	—	—	—
KX-NCS2205	Activation Key for CA PRO for 5 Users	CA Pro 5users	●	●	—	—	—
KX-NCS2210	Activation Key for CA PRO for 10 Users	CA Pro 10users	●	●	—	—	—
KX-NCS2240	Activation Key for CA PRO for 40 Users	CA Pro 40users	●	●	—	—	—
KX-NCS2249	Activation Key for CA PRO for 128 Users	CA Pro 128users	●	●	—	—	—
KX-NCS2301	Activation Key for CAACD Monitor for 1 ICD Supervisor	CA Supervisor 1user	●	●	—	—	—
KX-NCS2401	Activation Key for CA Console 1 user	CA Console 1 user	●	●	—	—	—
KX-NCS2901	Activation Key for CA Network 1 user	CA Network 1 user	●	●	—	—	—
KX-NCS2905	Activation Key for CA Network 5 user	CA Network 5 user	●	●	—	—	—
KX-NCS2910	Activation Key for CA Network 10 user	CA Network 10 user	●	●	—	—	—
KX-NCS2940	Activation Key for CA Network 40 user	CA Network 40 user	●	●	—	—	—
KX-NCS2949	Activation Key for CA Network 128 user	CA Network 128 user	●	●	—	—	—
KX-NCS3102	2-Channel IP Trunk Activation Key	2 IP Trunk	●	—	—	—	—
KX-NCS3104	4-Channel IP Trunk Activation Key	4 IP Trunk	●	—	—	—	—
KX-NCS3201	1-Channel IP Softphone/IP Proprietary Telephone Activation Key	1 IP Softphone/IP PT	●	—	—	—	—
KX-NCS3204*	4-Channel IP Softphone/IP Proprietary Telephone Activation Key	4 IP Softphone/IP PT	●	—	—	—	—
KX-NCS3208	8-Channel IP Softphone/IP Proprietary Telephone Activation Key	8 IP Softphone/IP PT	●	—	—	—	—
KX-NCS3216*	16-Channel IP Softphone/IP Proprietary Telephone Activation Key	16 IP Softphone/IP PT	●	—	—	—	—
KX-NCS3501	1-Channel IP Proprietary Telephone Activation Key	1 IP PT	●	—	—	—	—
KX-NCS3504*	4-Channel IP Proprietary Telephone Activation Key	4 IP PT	●	—	—	—	—
KX-NCS3508	8-Channel IP Proprietary Telephone Activation Key	8 IP PT	●	—	—	—	—
KX-NCS3516*	16-Channel IP Proprietary Telephone Activation Key	16 IP PT	●	—	—	—	—
KX-NCS3701	1-Channel SIP Extension Activation Key	1 SIP Extension	●	—	—	—	—
KX-NCS3704*	4-Channel SIP Extension Activation Key	4 SIP Extension	●	—	—	—	—
KX-NCS3708*	8-Channel SIP Extension Activation Key	8 SIP Extension	●	—	—	—	—
KX-NCS3716	16-Channel SIP Extension Activation Key	16 SIP Extension	●	—	—	—	—
KX-NCS3910	Activation Key for Software Upgrade to Enhanced Version	Software Upgrade 01	●	—	—	—	—
KX-NCS4102	2-Channel IP Trunk Activation Key	2 IP Trunk	—	●	●	—	—
KX-NCS4104	4-Channel IP Trunk Activation Key	4 IP Trunk	—	●	●	—	—
KX-NCS4201	1-Channel IP Softphone/IP Proprietary Telephone Activation Key	1 IP Softphone/IP PT	—	●	●	—	—
KX-NCS4204*	4-Channel IP Softphone/IP Proprietary Telephone Activation Key	4 IP Softphone/IP PT	—	●	●	—	—
KX-NCS4208	8-Channel IP Softphone/IP Proprietary Telephone Activation Key	8 IP Softphone/IPPT	—	●	●	—	—
KX-NCS4216*	16-Channel IP Softphone/IP Proprietary Telephone Activation Key	16 IP Softphone/IP PT	—	●	●	—	—
KX-NCS4501	1-Channel IP Proprietary Telephone Activation Key	1 IP PT	—	●	●	—	—
KX-NCS4504*	4-Channel IP Proprietary Telephone Activation Key	4 IP PT	—	●	●	—	—
KX-NCS4508	8-Channel IP Proprietary Telephone Activation Key	8 IP PT	—	●	●	—	—
KX-NCS4516*	16-Channel IP Proprietary Telephone Activation Key	16 IP PT	—	●	●	—	—
KX-NCS4701	1-Channel SIP Extension Activation Key	1 SIP Extension	—	●	●	—	—
KX-NCS4704*	4-Channel SIP Extension Activation Key	4 SIP Extension	—	●	●	—	—
KX-NCS4708*	8-Channel SIP Extension Activation Key	8 SIP Extension	—	●	●	—	—

*Purchase is only via the internet. Enquire for further details.

Note:Some cards will be exported to limited countries. Please contact our dealer and confirm the availability of specific cards in your country.

Optional Accessories for NCP & TDE & TDA

Model No.	Description		NCP	TDE600	TDE100/200	TDA100/200	TDA30	TDA15
[NPC/TDE/TDA Options]								
KX-NCS4716	16-Channel SIP Extension Activation Key	16 SIP Extension	—	●	●	—	—	—
KX-NCS4910	Activation Key for Enhanced Feature (TDE100/200)	Software Upgrade01	—	—	●	—	—	—
KX-NCS4950	Activation Key for Enhanced Feature (TDE600)	Software Upgrade 01	—	●	—	—	—	—
KX-TDE0105	Memory Expansion Card	IPCMEC	—	●	●	—	—	—
KX-TDE0110	16-Channel VoIP DSP Card (A 4-Channel IP Trunk activation key and an 8 channel IP Proprietary telephone activation key preinstalled.)	DSP16	●	●	●	—	—	—
KX-TDE0111	64-Channel VoIP DSP Card (Four 4-Channel IP Trunk activation key and four 8 channel IP Proprietary telephone activation key preinstalled.)	DSP64	●	●	●	—	—	—
KX-TDE620	Expansion Shelf	Expansion Shelf	—	●	—	—	—	—
KX-A228	S/M-type Back-up Battery Cable	Back-up Battery Cable	—	●	●	●	●	—
KX-A229	L-type Back-up Battery Cable	Back-up Battery Cable	—	●	●	●	—	—
KX-A258	Blank Slot Cover	Blank Slot Cover	—	●	●	●	—	—
KX-TDA0103	L-Type Power Supply Unit	PSU-L	—	●	—/●	—/●	—	—
KX-TDA0104	M-Type Power Supply Unit	PSU-M	—	●	●	—	—	—
KX-TDA0105	Memory Expansion Card	MEC	—	—	—	●	—	—
KX-TDA0108	S-Type Power Supply Unit	PSU-S	—	—	●/—	●/—	—	—
KX-TDA0143	4 Cell Station Interface Card	CSIF4	—	●	●	●	—	—
KX-TDA0144	8 Cell Station Interface Card	CSIF8	—	●	●	●	—	—
KX-TDA0161	4-Port Doorphone Card	DPH4	●	●	●	●	—	—
KX-TDA0164	4-Port External Input/Output Card	EIO4	●	●	●	●	—	—
KX-TDA0166	16-Channel Echo Canceller Card	ECHO16	●	—	●	●	—	—
KX-TDA0168	Extension Caller ID Card	EXT-CID	—	●	●	●	—	—
KX-TDA0170	8-Port Digital Hybrid Extension Card	DHLC8	—	●	●	●	—	—
KX-TDA0171	8-Port Digital Extension Card	DLC8	—	●	●	●	—	—
KX-TDA0172	16-Port Digital Extension Card	DLC16	—	●	●	●	—	—
KX-TDA0173	8-Port Single Line Telephone Extension Card	SLC8	—	●	●	●	—	—
KX-TDA0174	16-Port Single Line Telephone Extension Card	SLC16	—	—	●	●	—	—
KX-TDA0175	16-Port Single Line Telephone Extension with Message Lamp Card	MSLC16	—	—	●	●	—	—
KX-TDA0177	16-Port Single Line Telephone Extension Card with Caller ID	CSLC16	—	●	●	●	—	—
KX-TDA0180	8-Port Analogue Trunk Card	LCOT8	—	—	●	●	—	—
KX-TDA0181	16-Port Analogue Trunk Card	LCOT16	—	—	●	●	—	—
KX-TDA0182	8-Port DID Card	DID8	—	●	●	●	—	—
KX-TDA0184	8-Port E & M Trunk Card	E&M8	—	●	●	●	—	—
KX-TDA0188	E-1 Trunk Card	E1	—	●	●	●	—	—
KX-TDA0189	8-Port Caller ID/Pay Tone Card	CID/PAY8	—	●	●	●	—	—
KX-TDA0190	Optional 3-Slot Base Card	OPB3	—	●	●	●	—	—
KX-TDA0191	4-Channel Message Card	MSG4	●	●	●	●	—	—
KX-TDA0192	2-Channel Simplified Voice Message Card	ESVM2	●	●	●	●	—	—
KX-TDA0193	8-Port Caller ID Card	CID8	—	●	●	●	—	—
KX-TDA0194	4-Channel Simplified Voice Message Card	ESVM4	●	●	●	●	—	—
KX-TDA0196	Remote Card	RMT	●	●	●	●	—	—
KX-TDA0284	4-Port BRI Card	BRI4	—	●	●	●	—	—
KX-TDA0288	8-Port BRI Card	BRI8	—	●	●	●	—	—
KX-TDA0290CE/CJ	PRI Card	PRI30	—	●	●	●	—	—
KX-TDA0410	CTI link Card	CTI link Card	—	—	—	●	—	—
KX-TDA0470	16-Channel VoIP Extension Card	IP-EXT16	—	●	●	●	—	—
KX-TDA0484	4-Channel VoIP Gateway Card	IP-GW4E	—	●	●	●	—	—
KX-TDA0490	16-Channel VoIP Gateway Card	IP-GW16	—	●	●	●	—	—
KX-TDA0820	SD Memory Card for Software Upgrade	SD	—	—	—	●	—	—
KX-TDA0920	SD Memory Card for Software Upgrade to Enhanced Version	SD	—	—	—	●	—	—
KX-TDA6105	Memory Expansion Card	EMEC	—	—	—	—	—	—
KX-TDA6110	Bus Master Card	BUS-M	—	●	—	—	—	—
KX-TDA6111	Bus Master Expansion Card	BUS-ME	—	●	—	—	—	—
KX-TDA6166	16-Channel Echo Canceller Card	EECHO16	—	●	—	—	—	—
KX-TDA6174	16-Port Single Line Telephone Extension Card	ESLC16	—	●	—	—	—	—
KX-TDA6175	16-Port Single Line Telephone Extension with Message Lamp Card	MSLC16	—	●	—	—	—	—
KX-TDA6178	24-Port Single Line Telephone Extension Card with Caller ID	ECSLC24	—	●	—	—	—	—
KX-TDA6181	16-Port Analogue Trunk Card	ELCOT16	—	●	—	—	—	—
KX-TDA620	Expansion Shelf	Expansion Shelf	—	●	—	—	—	—
KX-TDA6201	Mounting Kit for expanding to a 3- or 4- Shelf System	Mounting Kit	—	●	—	—	—	—
KX-TDA6920	SD Memory Card for Software Upgrade to Enhanced Version	SD	—	—	—	—	—	—
[TDA15/30 Options]								
KX-A236	Additional AC Adaptor	Additional AC Adaptor	—	—	—	—	●	—
KX-TDA3105	Memory Expansion Card	MEC	—	—	—	—	●	—
KX-TDA3161	4-Port Doorphone Card	DPH4	—	—	—	—	●	●
KX-TDA3162	2-Port Doorphone Card (German Type)	DPH2	—	—	—	—	●	●
KX-TDA3166	8-Channel Echo Canceller Card	ECHO8	—	—	—	—	●	●
KX-TDA3168	Extension Caller ID Card	EXT-CID	—	—	—	—	●	—
KX-TDA3171	4-Port Digital Extension Card	DLC4	—	—	—	—	●	—
KX-TDA3172	8-Port Digital Extension Card	DLC8	—	—	—	—	●	●
KX-TDA3173	4-Port Single Line Telephone Extension Card	SLC4	—	—	—	—	●	—
KX-TDA3174	8-Port Single Line Telephone Extension Card	SLC8	—	—	—	—	●	●
KX-TDA3180	4-Port Analogue Trunk Card	LCOT4	—	—	—	—	●	—
KX-TDA3182	3-Port DID Card	DID3	—	—	—	—	●	—
KX-TDA3183	2-Port Analogue Trunk Card	LCOT2	—	—	—	—	●	●
KX-TDA3191	2-Channel Message Card	MSG2	—	—	—	—	●	●
KX-TDA3192	2-Channel Simplified Voice Message Card	SVM2	—	—	—	—	●	●
KX-TDA3193	4-Port Caller ID Card	CID4	—	—	—	—	●	—
KX-TDA3194	2-Channel Simplified Voice Message Card	ESVM2	—	—	—	—	●	●
KX-TDA3196	Remote Card	RMT	—	—	—	—	●	—
KX-TDA3280	2-Port BRI Card	BRI2	—	—	—	—	●	●
KX-TDA3283	1-Port BRI Card	BRI1	—	—	—	—	●	●
KX-TDA3450	4-Channel SIP Trunk Card	SIP-GW4	—	—	—	—	●	●
KX-TDA3451	4-Channel VoIP DSP Card	SIP-DSP4	—	—	—	—	●	●

*Purchase is only via the internet. Enquire for further details.

Model No.	Description		NCP	TDE600	TDE100/200	TDA100/200	TDA30	TDA15
KX-TDA3470	4-Channel VoIP Extension Card	IP-EXT4	—	—	—	—	●	●
KX-TDA3480	4-Channel VoIP Gateway Card	IP-GW4	—	—	—	—	●	●
KX-TDA3820	SD Memory Card for Software Upgrade	SD	—	—	—	—	●	●
KX-TDA3920	SD Memory Card for Software Upgrade to Enhanced Version	SD	—	—	—	—	●	●
[Other Options]								
KX-A291	Hotel PMS Interface (Up to 128 rooms)	Software	●	●	●	●	●	●
KX-A292	Hotel PMS Interface (Up to 256 rooms)	Software	●	●	●	●	●	●
KX-A293	Hotel PMS Interface (Up to 960 rooms)	Software	●	●	●	●	●	●
KX-TDA0300	PC Console Software	Software	●	●	●	●	●	●
KX-TDA0350	PC Phone Software	Software	●	●	●	●	●	●

SLT:Single Line Telephone, APT:Analogue Proprietary Telephone, DPT:Digital Proprietary Telephone,
DISA:Direct Inward System Access, DECT:Digital Enhanced CordlessTelecommunications.

Equipment Compatibility for NCP&TDE&TDA

Model No.	Description		NCP	TDE600	TDE100/200	TDA100/200	TDA30	TDA15
[Wireless]								
KX-TDA0155CE	2-Channel Cell Station Unit Using a DHLC/DLC Card for DECT Portable Station		●	●	●	●	●	●
KX-TDA0156CE	4-Channel Cell Station Unit Using a CSIF Card for DECT Portable Station		—	●	●	●	—	—
KX-TDA0158CE	8-Channel High-density Cell Station Unit Using a DHLC/DLC Card for DECT Portable Station		—	●	●	●	●	●
KX-NCP0158CE	8-Channel IP Cell Station Unit Using a V-IPCS4 Card		●	●	●	—	—	—
KX-A421	AC Adaptor for KX-NCP0158		●	●	●	—	—	—
KX-TCA175	DECT Portable Station(PS) Basic Model		●	●	●	●	●	●
KX-TCA275	DECT Portable Station(PS) Compact Business Model		●	●	●	●	●	●
KX-TCA355	DECT Portable Station (PS)Tough type Model		●	●	●	●	●	●
[IP proprietary telephone]								
KX-NT400	IP proprietary telephones		●	●	●	—	—	—
KX-A420	AC Adaptor		●	●	●	—	—	—
KX-NT300series	IP proprietary telephones		●	●	●	●	●	●
KX-A420	AC Adaptor		●	●	●	●	●	●
[IP softphone]								
KX-NCS8100series	IP softphones		●	●	●	●	●	●
[SIP Terminal]								
KX-HGT100	SIP Telephone		●	●	●	—	—	—
KX-A420	AC Adaptor		●	●	●	—	—	—
KX-NT700	IP conferencing phone		●	●	●	*	*	*
[Proprietary telephone]								
KX-DT300series	Digital proprietary telephones		●	●	●	●	●	●
KX-T76series	Digital proprietary telephones		●	●	●	●	●	●
[Analogue telephone]								
KX-T77series	Analogue proprietary telephones		●	●	●	●	●	●
[Doorphone]								
KX-T30865	Doorphone		●	●	●	●	●	●
KX-T7765	Doorphone		●	●	●	●	●	●

*Only supports connections of Analogue Line Interface and Audio Interface.

Analogue Telephone Systems

System Capacity

KX-TEA308/TES824/TEM824

Model No.	TEA308	TES824	TEM824
CO lines			
Basic		3	6
Max	3	8	8
Extensions			
Basic	8	8	16
Max		24	24
Intercom paths	3	4	4
DTMF receivers	2	2	4
Door intercoms and openers (max.)	2	4	4

Optional Accessories for TEA308/TES824/TEM824

Model No.	Description	TEA308	TES824	TEM824
[Telephones]				
KX-T7730	Proprietary Telephone with 1-Line Display and Speakerphone (12 CO keys)	●	●	●
KX-T7735	Proprietary Telephone with 3-LineDisplay and Speakerphone (12 CO keys)	●	●	●
KX-T7740	DSS Console (32 DSS / BLF keys, 16 PF keys)	●	●	●
KX-T7710	Proprietary Telephone with Message / Ringer Lamp, One-Touch Dialler, Data Port	●	●	●
KX-T7101	SLT with Message Lamp, One-Touch Dialler, Data Port	●	●	●
[Others]				
KX-T7765	Doorphone	●	●	●
KX-A227	Backup Battery Cable	●	●	●
[Analogue Cards]				
KX-TE82460	2-Port Doorphone / Door Opener Card	●	●	●
KX-TE82461	4-Port Doorphone / Door Opener Card	—	●	●
KX-TE82474	8-Port Single Line Telephone Extension Card	—	●	●
KX-TE82480	2-Port Analogue CO Line and 8-Port Single Line Telephone Extension Card	—	●	●
KX-TE82483	3-Port Analogue CO Line and 8-Port Hybrid Extension Card	—	●	—
KX-TE82491	Message Expansion Card for OGM (1 ch, 180 sec)	—	●	●
KX-TE82492	2-Channel Voice Message Card	●	●	●
KX-TE82494*1	3-Port Caller ID Card	●	●	●

SLT : Single Line Telephone APT : Analogue Proprietary Telephone
DISA : Direct Inward System Access
*1 This card can only be used with a PBX that has software version 3.0 or later and hardware version 2 or later. The existing 3-Port Caller ID Card (KX-TE82493) can also be used, regardless of the PBX version.